

ALCOHOL EXPOSED PREGNANCY PROGRAMME OVERVIEW

Start Well Vision and Development of Programme

We will all have the best possible start in life.

- £1.6 million investment
- Initial 2 year 'proof of concept' to:
 - Reduce alcohol exposed pregnancies
 - Progress towards ending new cases of Foetal Alcohol Spectrum Disorders (FASD)
- Campaign design
- Procurement decisions
- Reviewing information materials
- Steering group membership
- Media and communications



"I have been trying to get professionals to talk about FASD for years and now I am in a room full of people talking about it, thank you"

Red Balloon Training



- 390 health and social care staff trained in CPD accredited Preventing Alcohol Exposed Pregnancies and FASD awareness
- 463 health and social care staff trained in AEP and FASD awareness by specialist midwives
- 100% of community midwives in PAHT testbed trained in AEP awareness, alcohol screening and Alcohol Brief Interventions
- Workforce training continues across testbed sites and final Red Balloon sessions used to support sustainability and reach
- Developing E-Learning in partnership with Red Balloon and NOFAS

Our 100% Ambition Universal Approaches



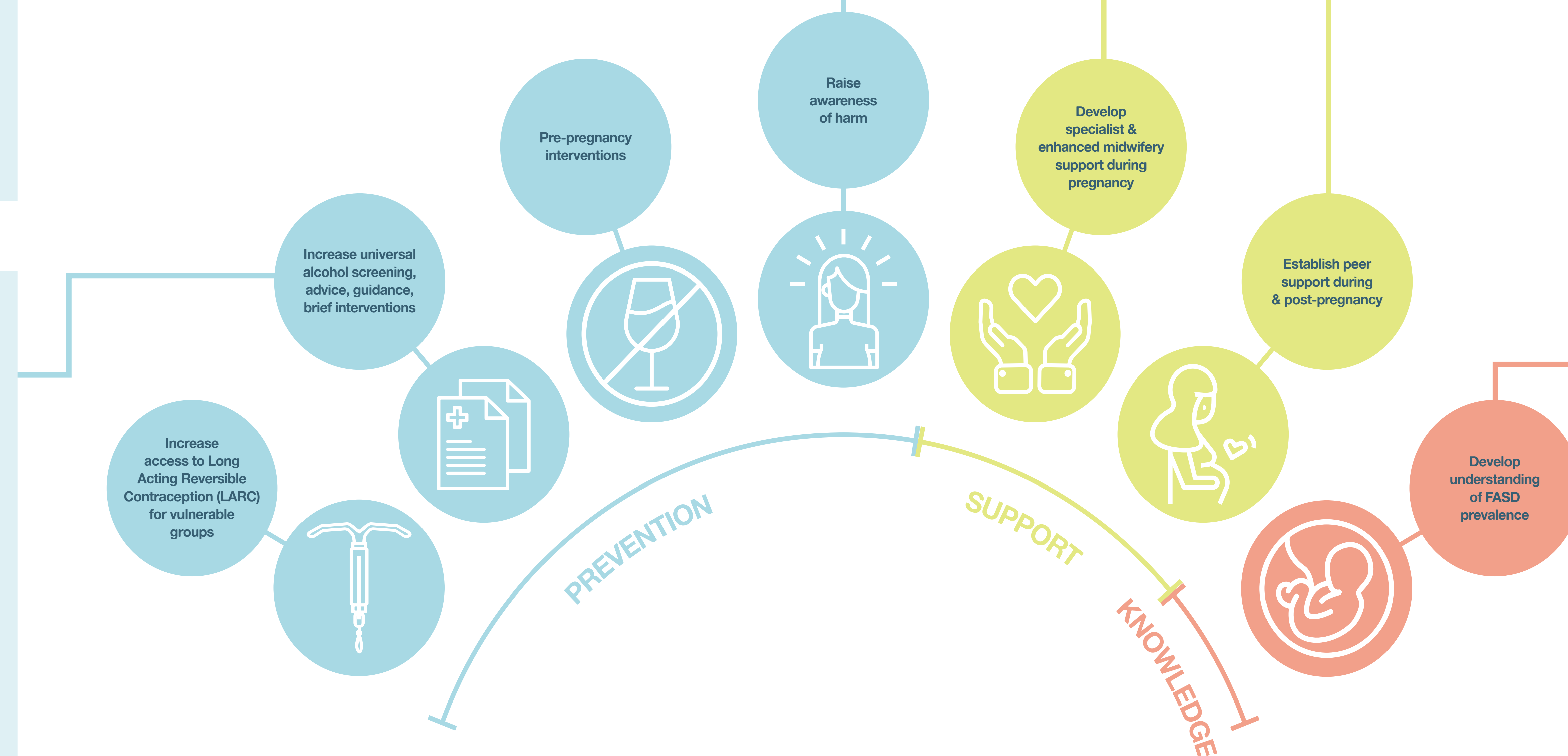
Alcohol Exposed Pregnancy Support

Acorn Recovery have been commissioned to provide enhanced support to women and their partners who are at risk and / or having an Alcohol Exposed Pregnancy

- Non-blaming, supportive group work programme
- One to one counsellor support
- Peer mentoring for individuals and groups
- Support to access wider network of support
- Activity to raise awareness of FASD

Tameside MAMA (Maternal Alcohol Management Algorithm) Pathway

Women at Tameside and Glossop Integrated Care Trust asked about alcohol consumption prior to pregnancy	3,085 97.4%
Women triggered alcohol assessment tool TWEAK	1,929 62.5%
Women who score TWEAK +2 at first antenatal appointment	735 38.1%
Women who score TWEAK +2 at first antenatal appointment, with a reduced TWEAK score at a second antenatal appointment	116 15.7%



Prevalence Study



We have commissioned the first UK FASD prevalence study. This study aims to:

- Accurately identify children from the sample who are likely to have FASD using the recommended **case ascertainment** method
- Accurately identify children from the sample who are likely to have another cause of developmental delay
- Use this data to create more accurate estimates for FASD prevalence in Greater Manchester and projections for the future
- Report expected **September 2020**